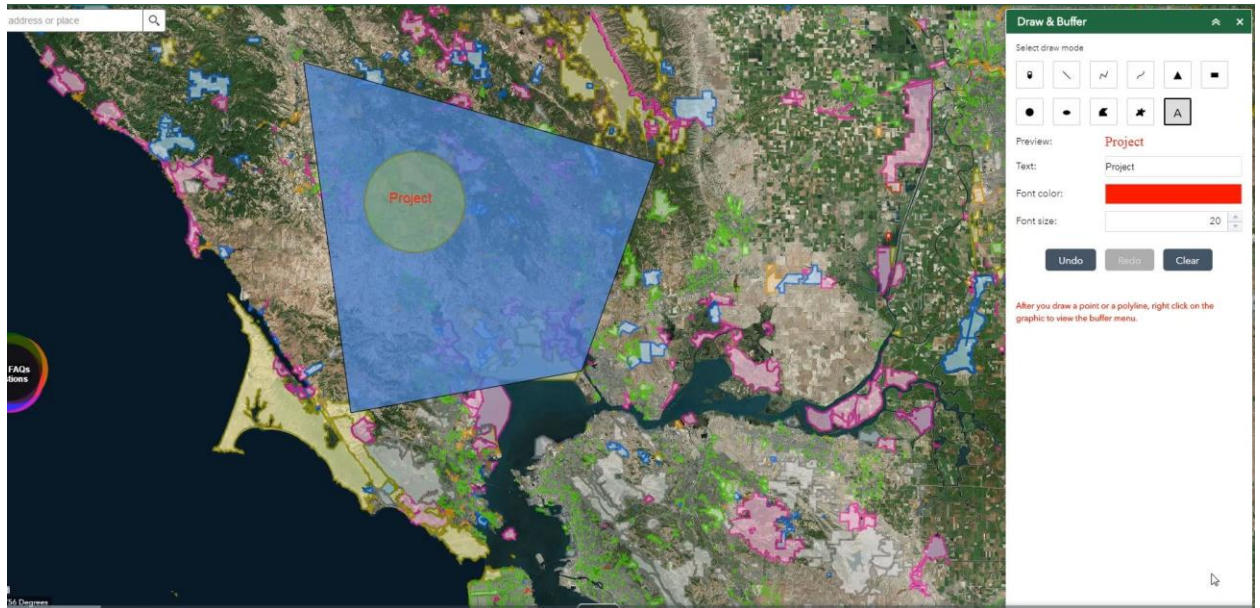


Save/Restore Session

The purpose of this tutorial is to demonstrate the functionality of the Save/Restore Session tool.

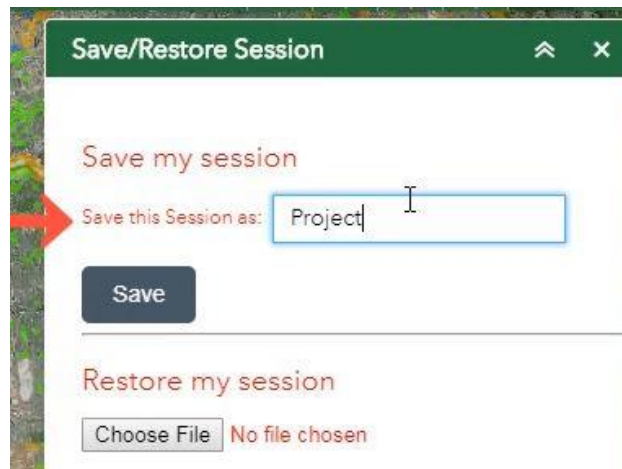
1. For this tutorial I have changed the basemap, activated a layer from the GIS Library, added a blue polygon shapefile, and used the draw tool to draw a yellow circle and add "Project" in red text to the map.



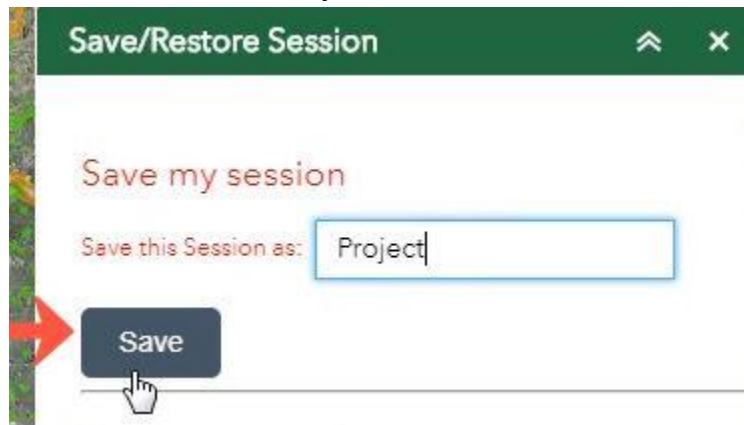
2. When you're working on a map and you would like to save your session, click on the *Save/Restore Session* icon.



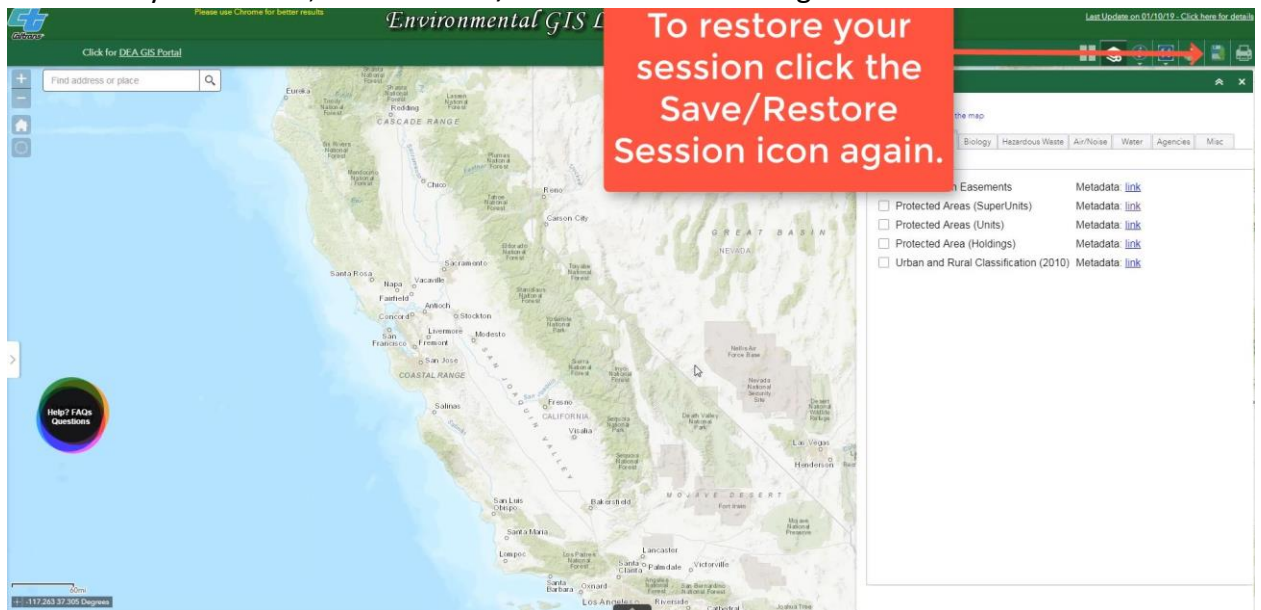
3. Type a name for your session in the text box.



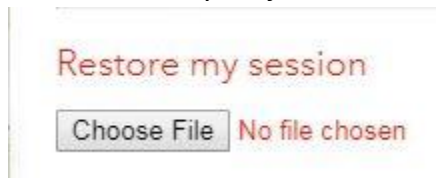
4. Click *Save* to download the session as a json file.



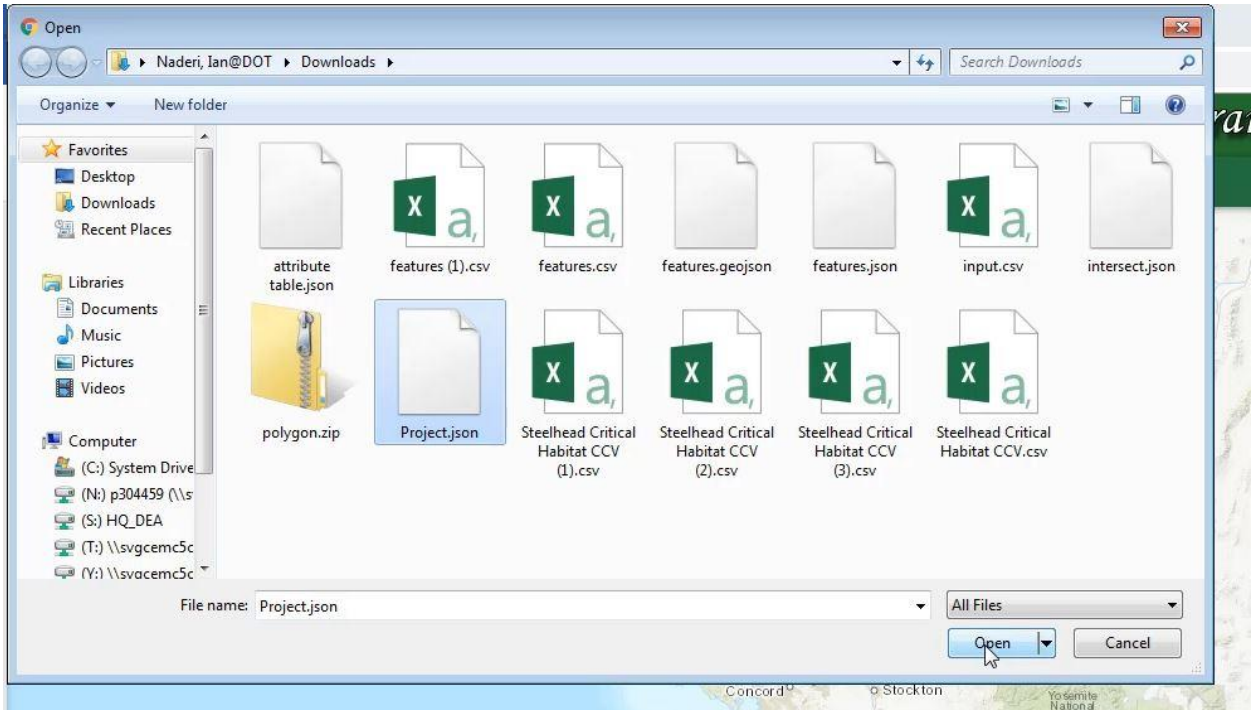
5. To restore your session, click the *Save/Restore Session* icon again.



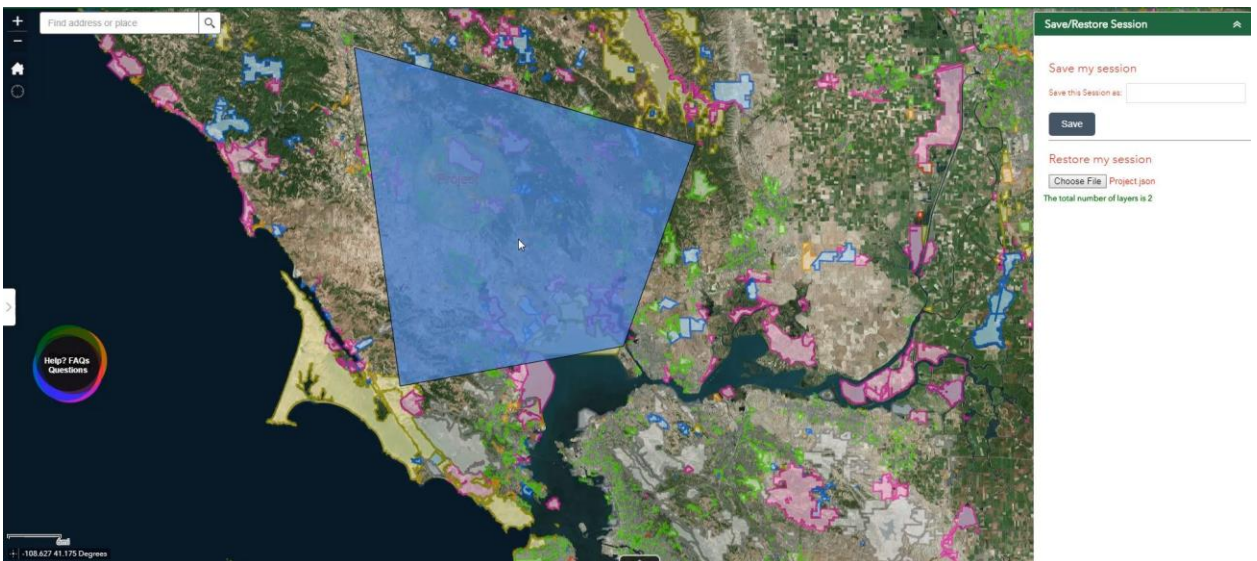
- Click the *Choose File* button to browse for your json file.



- Find your json file, select it, and then click *Open*.



- Your session will then be restored right where you left off. As you can see, the shapefile that was added is restored as well.



9. You can share the json file with other staff. They can open the file with the restore button, like it was shown in this tutorial.

