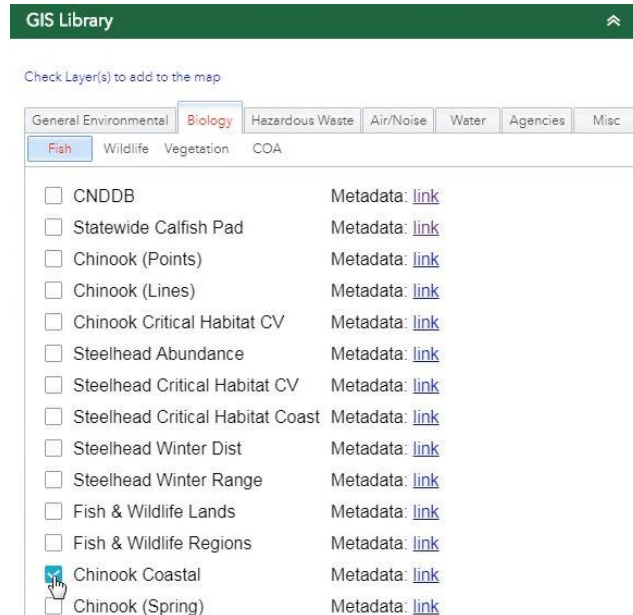


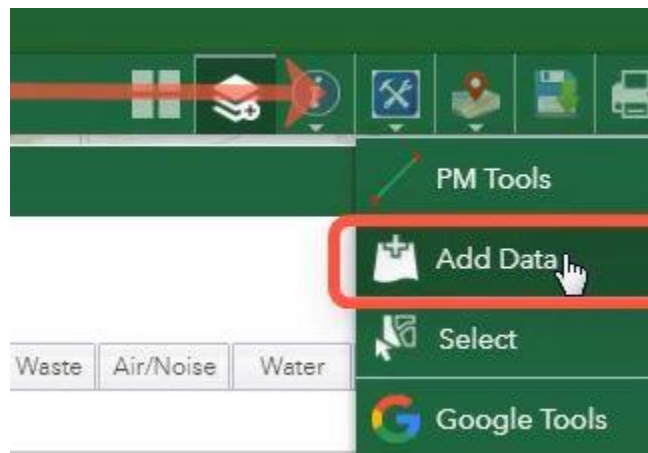
Intersect Tool

The purpose of this tutorial is to demonstrate the functionality of the tool that computes a geometric intersection of input features.

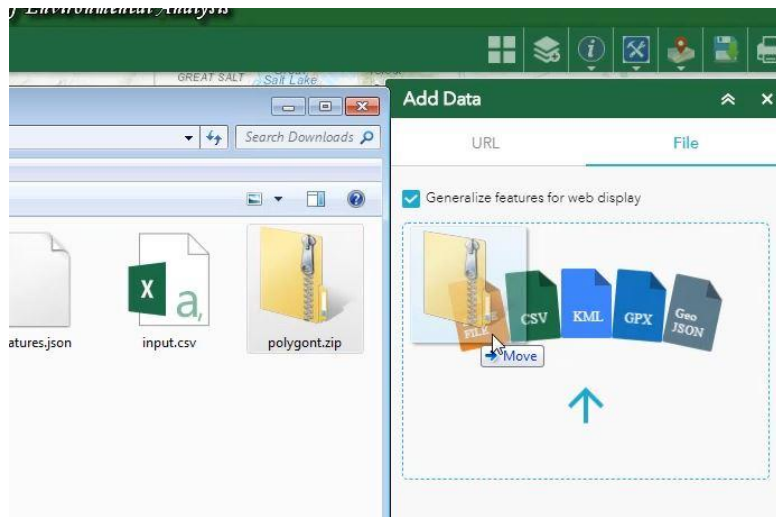
1. First, activate the layers that you want to perform the intersect with.



2. You can also import your own data to use with the Intersect tool. To import data, open the tools icon drop-down list and select *Add Data*.



3. Click on the file tab, and then click browse to select a file or drag and drop.



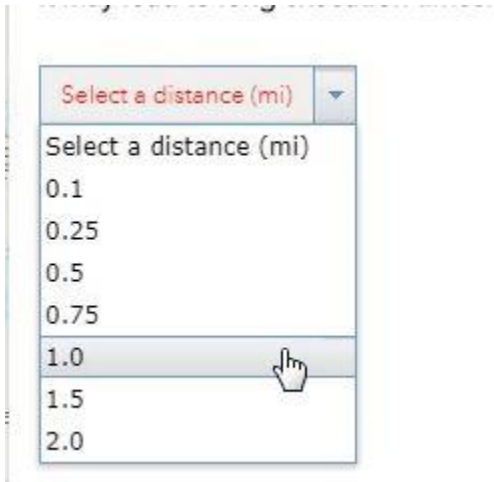
The light blue polygons are the layer from the GIS Library, and the dark blue polygon is the imported shapefile.



4. Select a layer to be the input, and a layer to be the polygon that intersects the input.



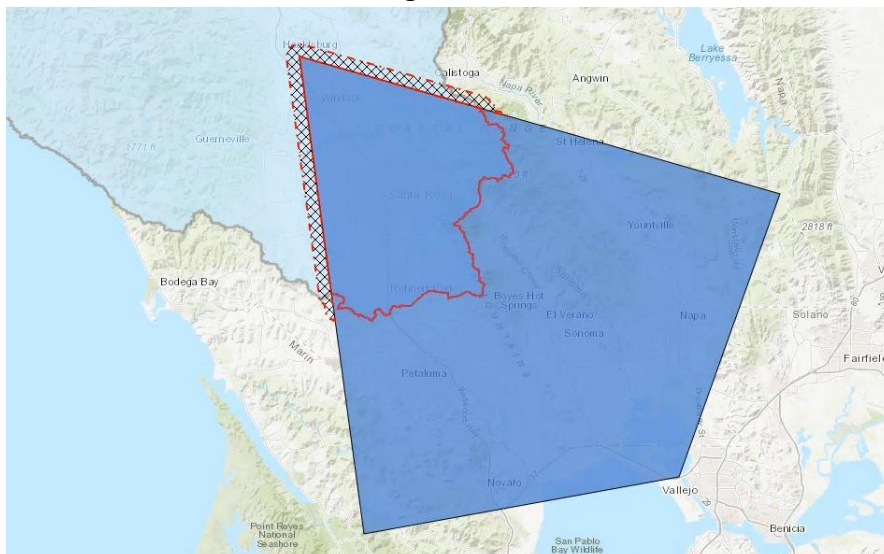
5. You have the option to create a buffer around the intersected area.



6. Click on *Intersect It!* To run the operation.



7. The intersection has a red boundary line. The Buffer zone has a red, dashed boundary line, filled with a black crosshatch shading.

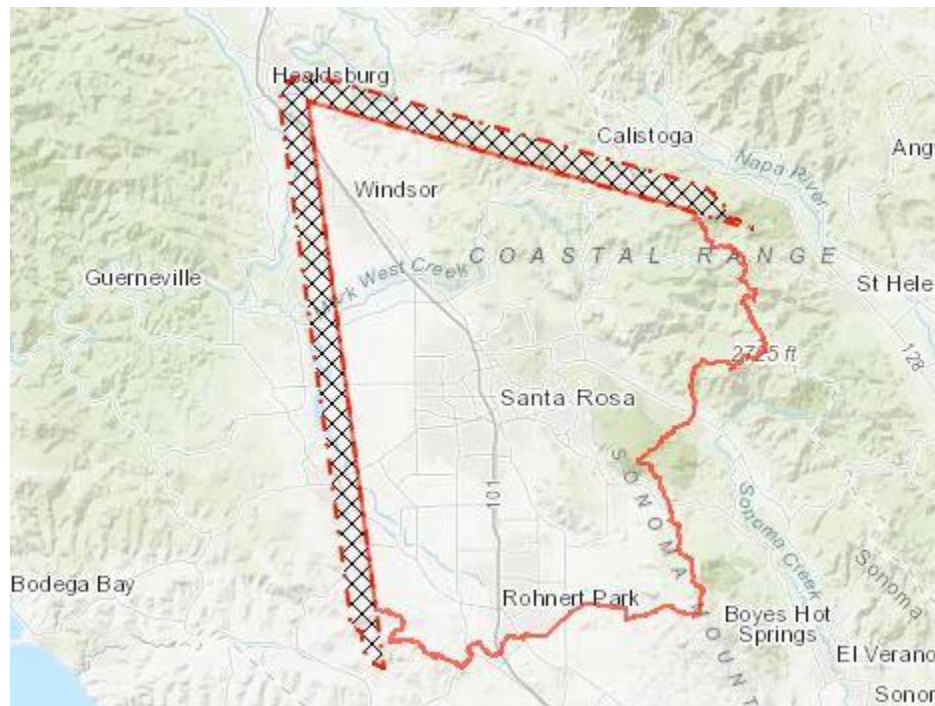


8. The red text at the bottom of the tool window shows the total intersected area, and the total buffered area. It also shows the number of features intersected.

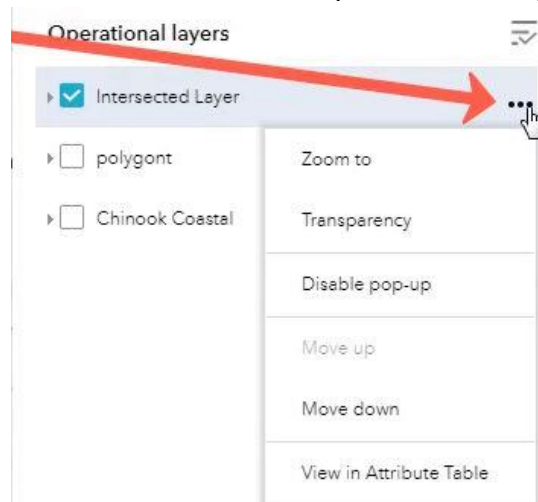
Reset

Total Intersected Area: 147358 acres on 1 features
Total buffer beyond intersected area: 23953 acres.

9. To view the intersected layer by itself, turn off the other layer in the layer list.



10. Click on the three dots next to the intersected layer to see the options menu.



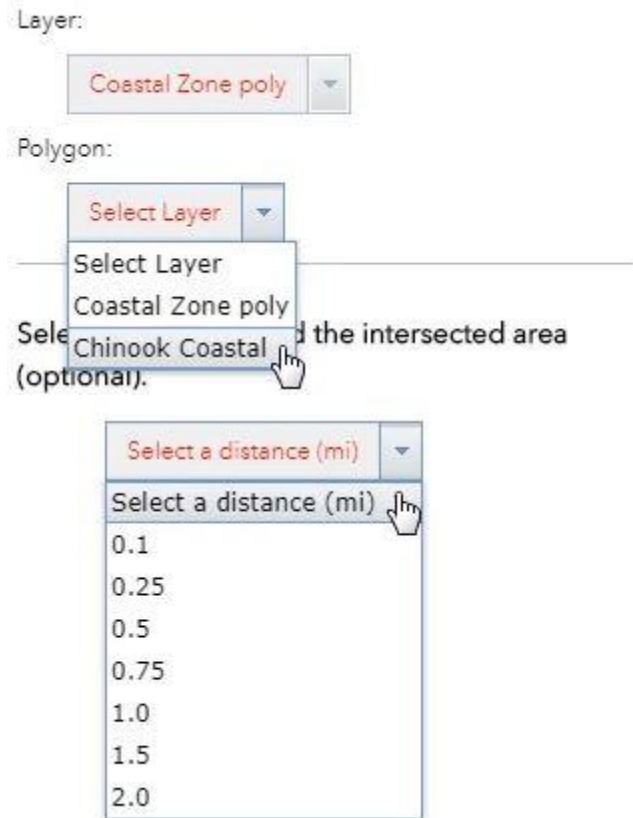
11. If you open the attribute table from the options menu you can view the tabular data of the intersected layer.



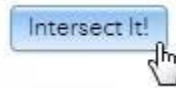
12. The Intersect tool can also be used to intersect layers that have multiple features overlapping.



13. Select the input and polygon layers. Select a buffer distance if you want to create a buffer.



14. Select *Intersect It!* when you're ready.

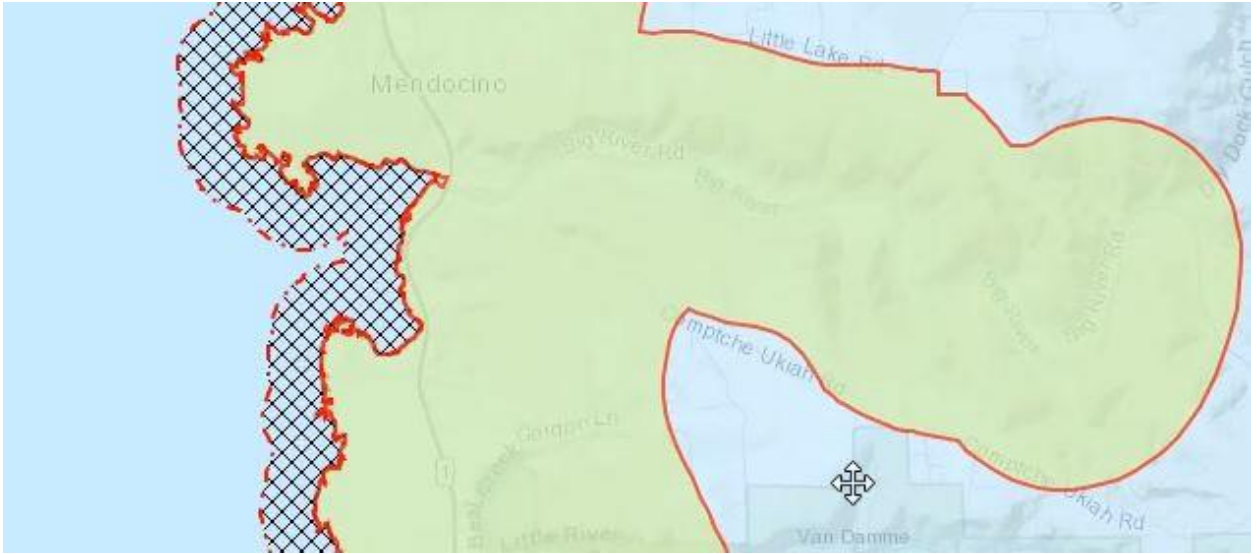


15. This time the intersected area covered 4 features.

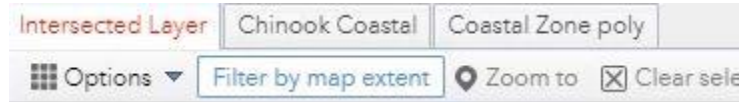
Total Intersected Area: 241144 acres on 4 features
Total buffer beyond intersected area: 47851 acres.



16. Zoom in to see more detail. Because the features intersect on the coastline, the buffer zone extends out from it.



17. Open the attribute table to see the tabular data for the intersected features. Turn off *Filter by map extent* to see all features of that layer.



COUNTY NAME	COUNTY ABBV	CoNo
SONOMA	SON	20
HUMBOLDT	HUM	4
DEL NORTE	DN	1
MENDOCINO	MEN	10