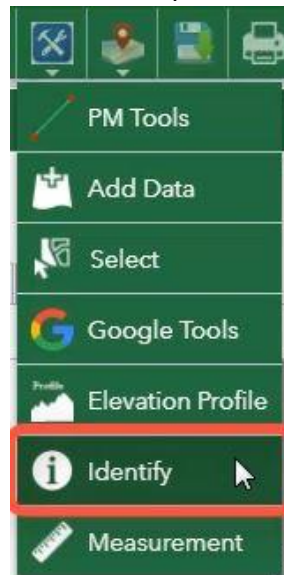


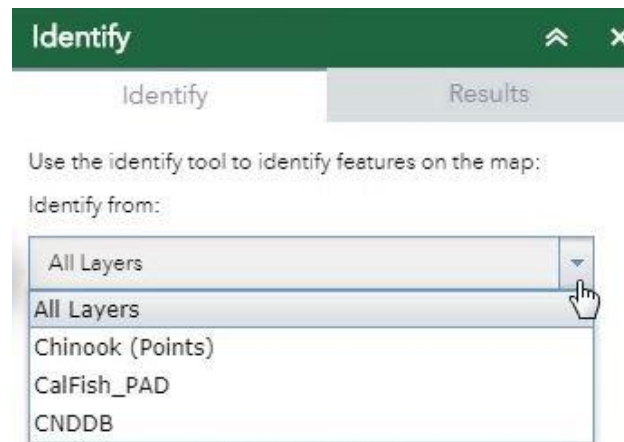
Identify Tool

The purpose of this tutorial is to demonstrate the functionality of the Identify tool.

1. First, activate the layers that you wish to use the Identify tool for.
2. Open the Identify tool from the tools icon drop-down list.



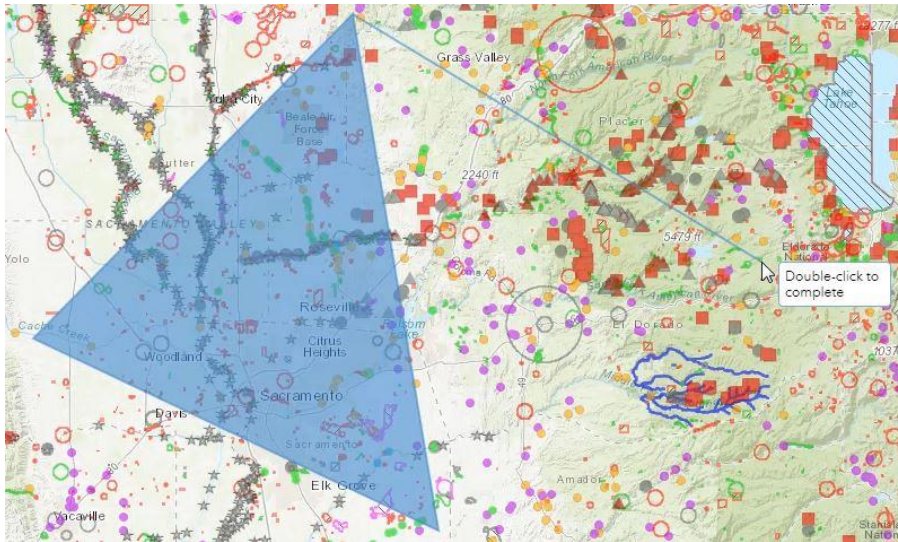
3. From the layers drop-down list, choose which layer you want to identify from or choose all layers.



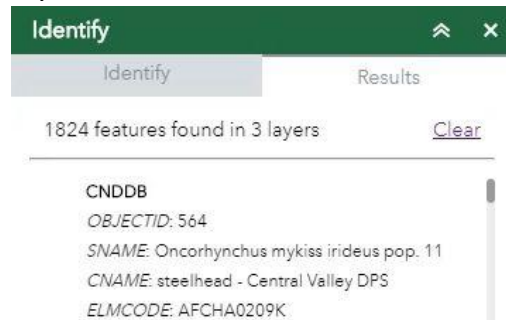
4. Then choose a draw mode.



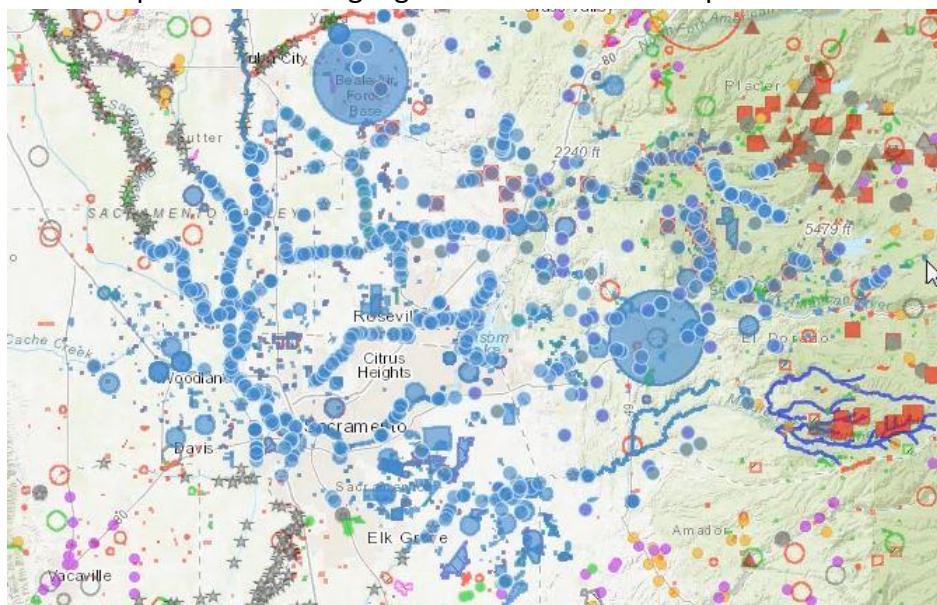
- Then draw on the map to create the area where you want to identify features.



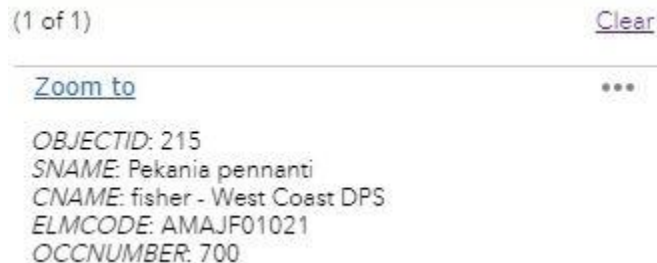
- All the features captured by the draw tool will be listed in the Results tab.



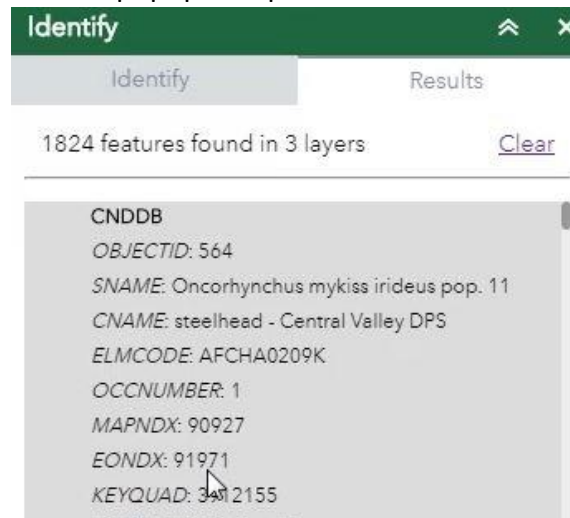
- All the features captured will be highlighted in blue on the map.



8. If you hover over a feature in the results tab it will be highlighted on the map and its information will become available in the popup side panel.



9. If you hover over a feature in the results tab it will be highlighted on the map and its information will also be in the popup side panel.



You can also click on the feature in the Results tab to zoom to it on the map or click on "Zoom to" in the popup side panel.



10. Click on **☰** in the popup side panel to see menu options.