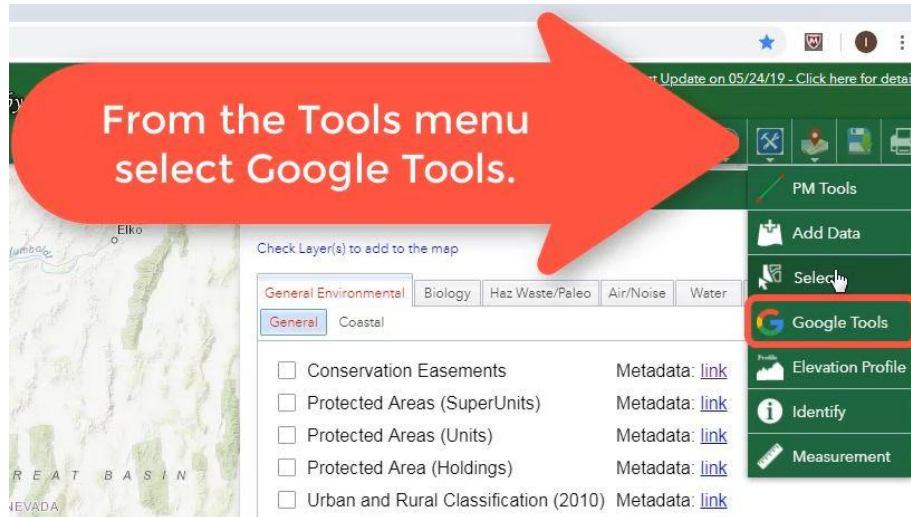


# Google Tools

The purpose of this tutorial is to demonstrate the functionality of the **Google Tools**. The Google Tools consists of *Google Street View* and *Google Earth*.

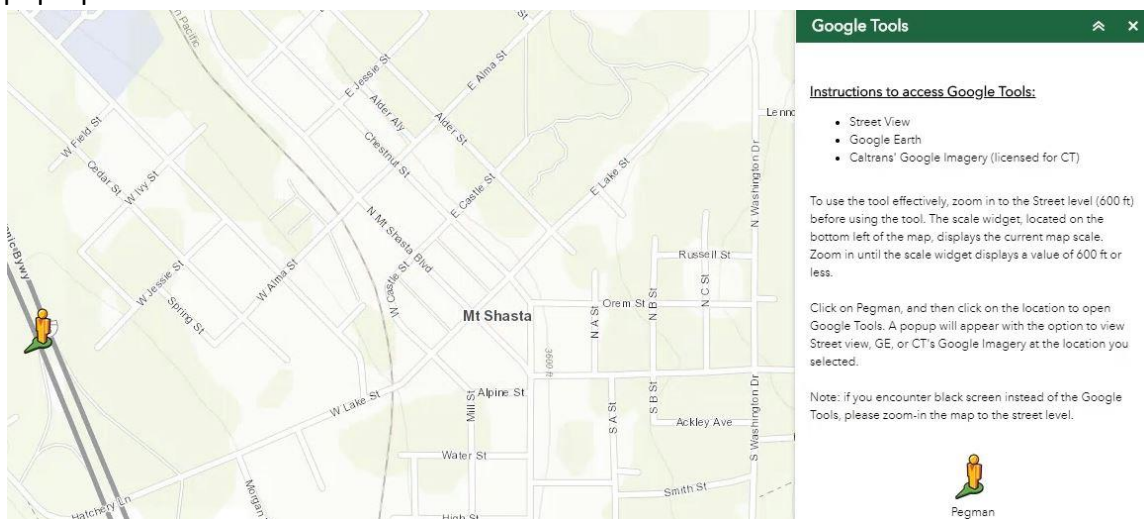
1. Open the *Google Tools* by opening the Tools menu in the upper right corner.



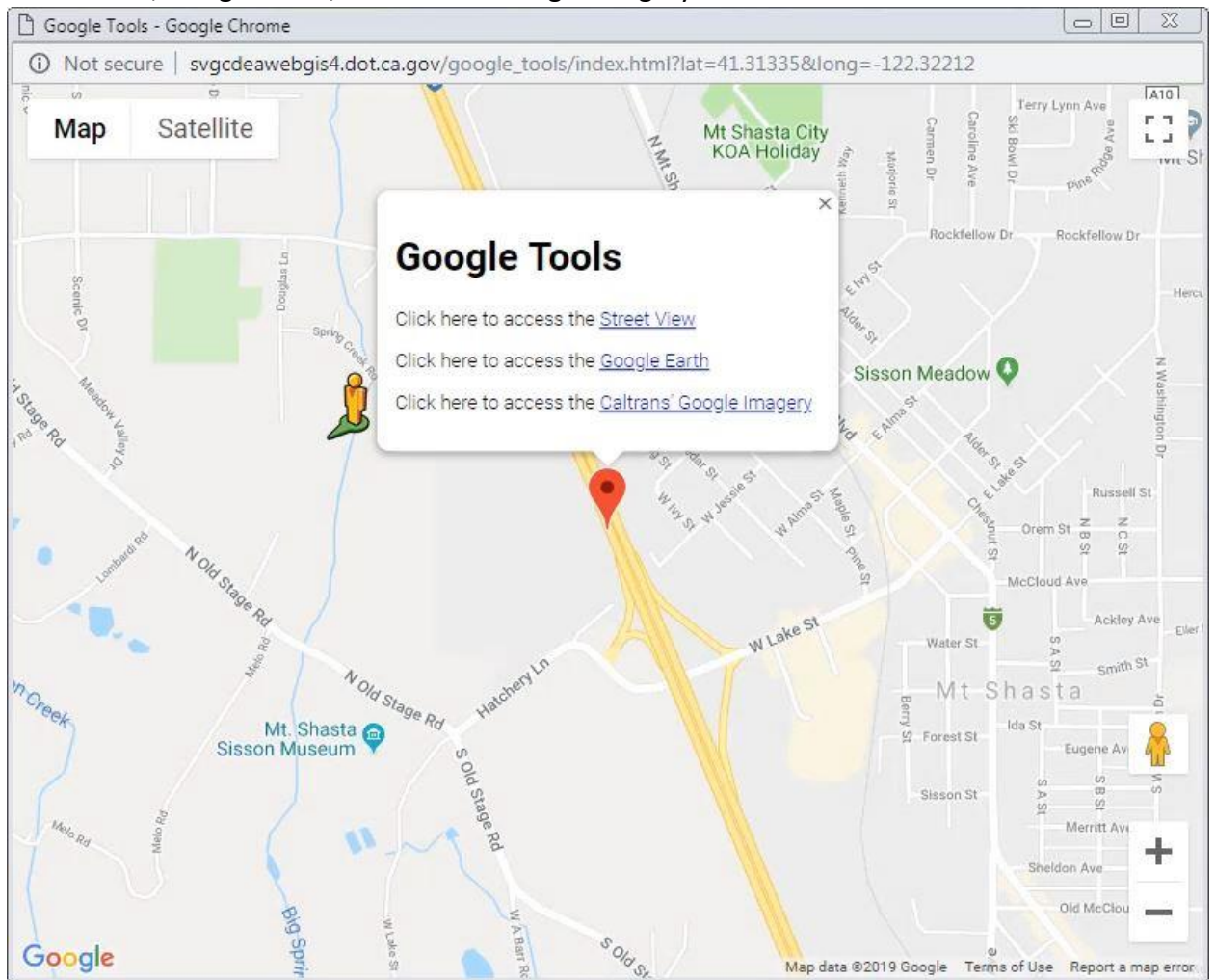
2. Zoom in to your area of interest. To use the tools effectively, zoom in to the street level (600 ft). The closer you zoom in, the better the accuracy.



3. Click on the Pegman and then select the location on the map to see the Google tools pop-up window.



- Once it is placed on the map, a pop-up window appears where you can select either Street View, Google Earth, or Caltrans' Google Imagery.

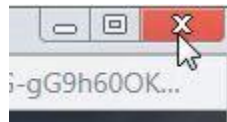


## Street View

1. When you select Street View the result will popup in a new window.

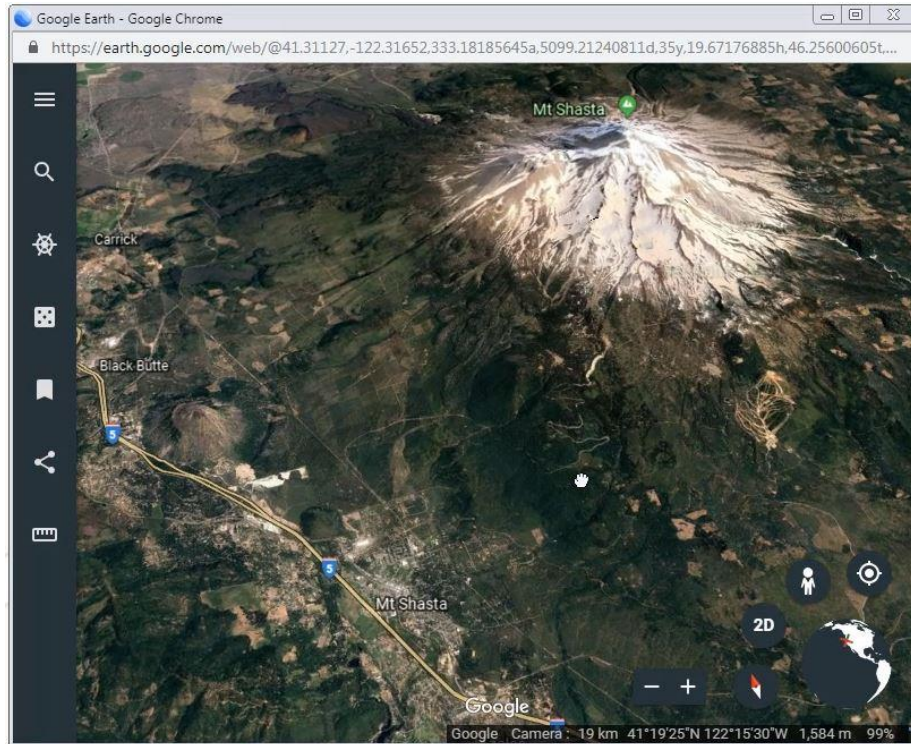


2. Close the window to go back to the Google Tools window.

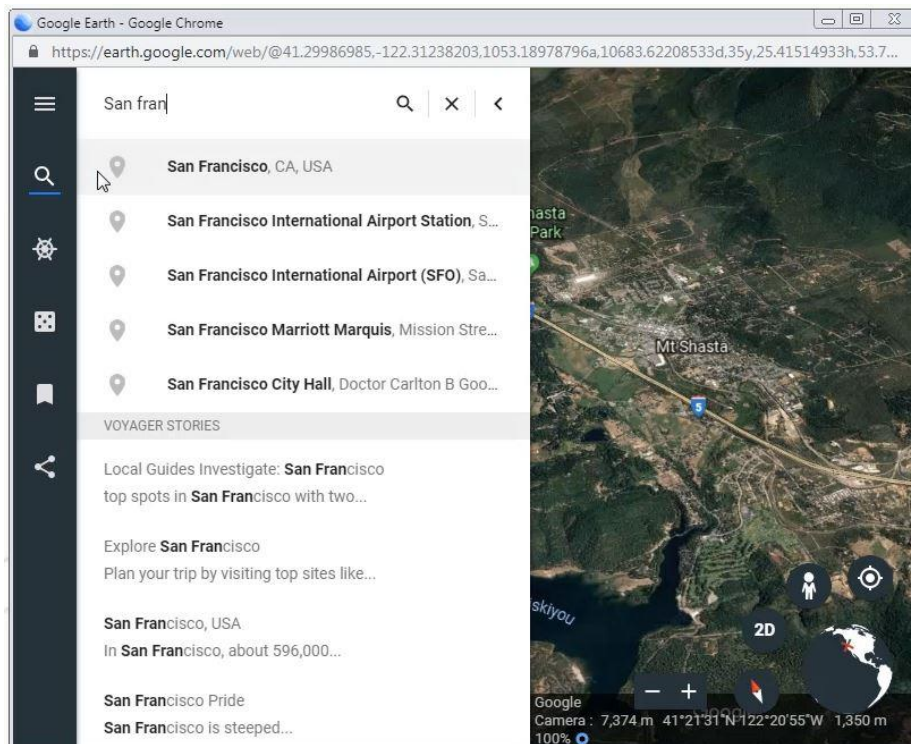


## Google Earth

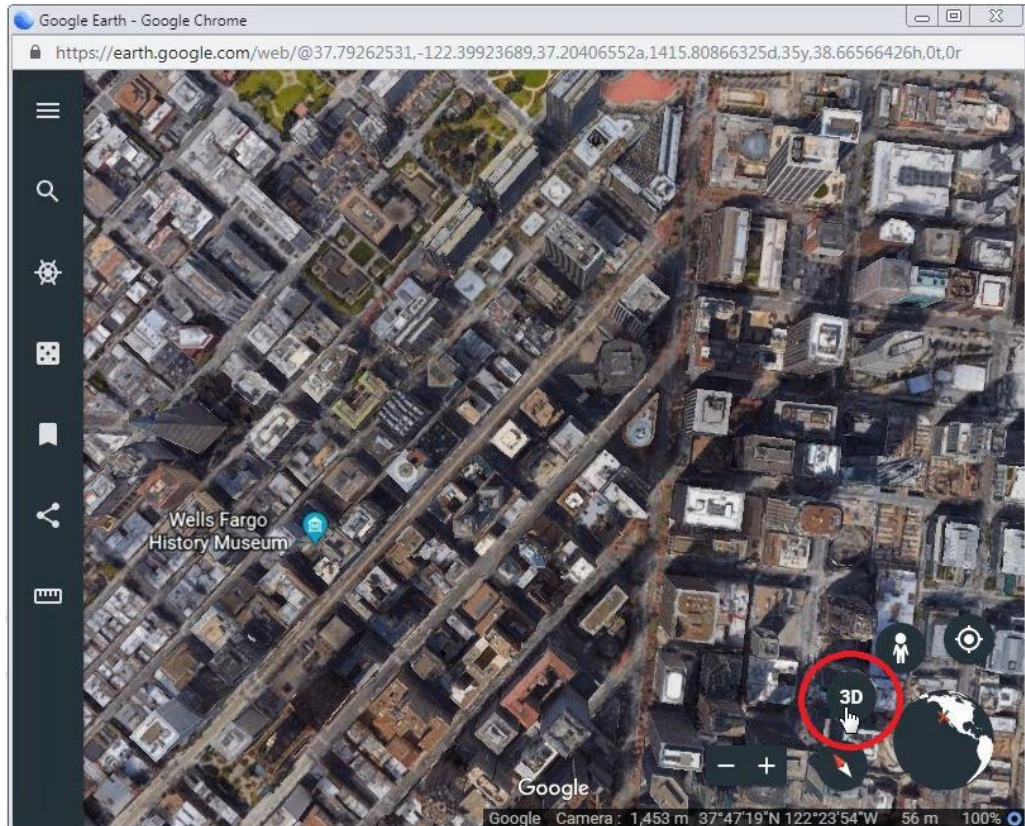
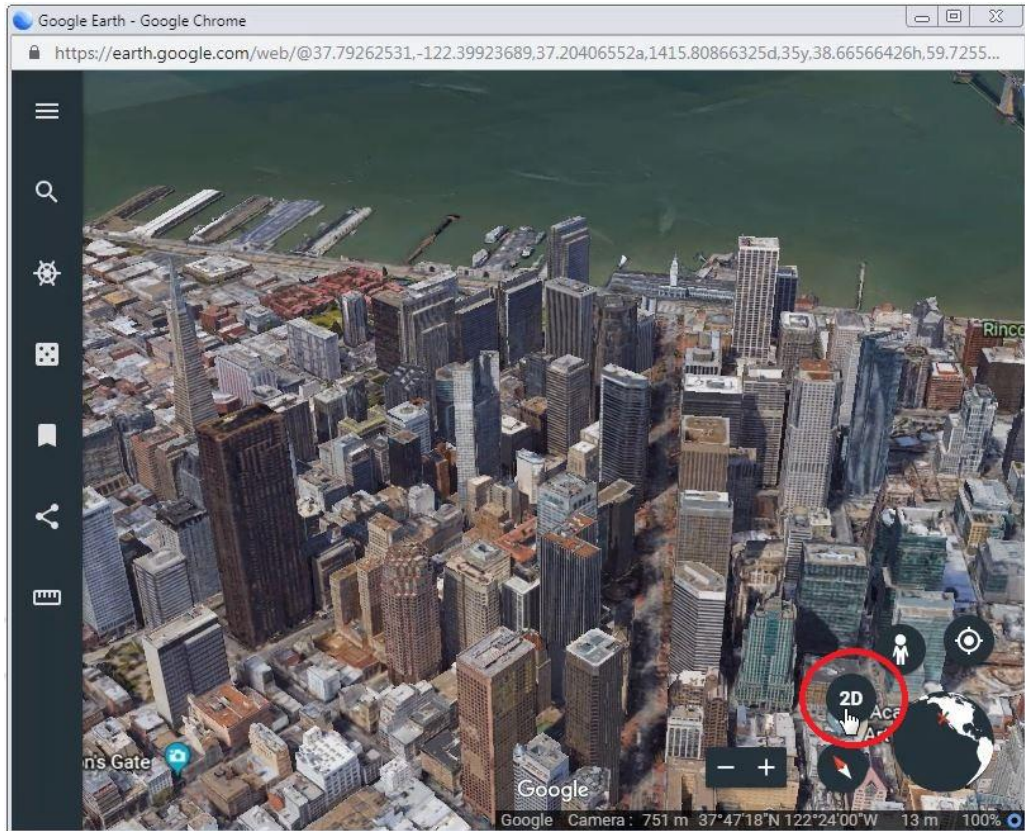
1. *Google Earth* will open in a new window. It renders a 3D representation of Earth.



2. Click on the search icon to open the search bar and search for a new location.



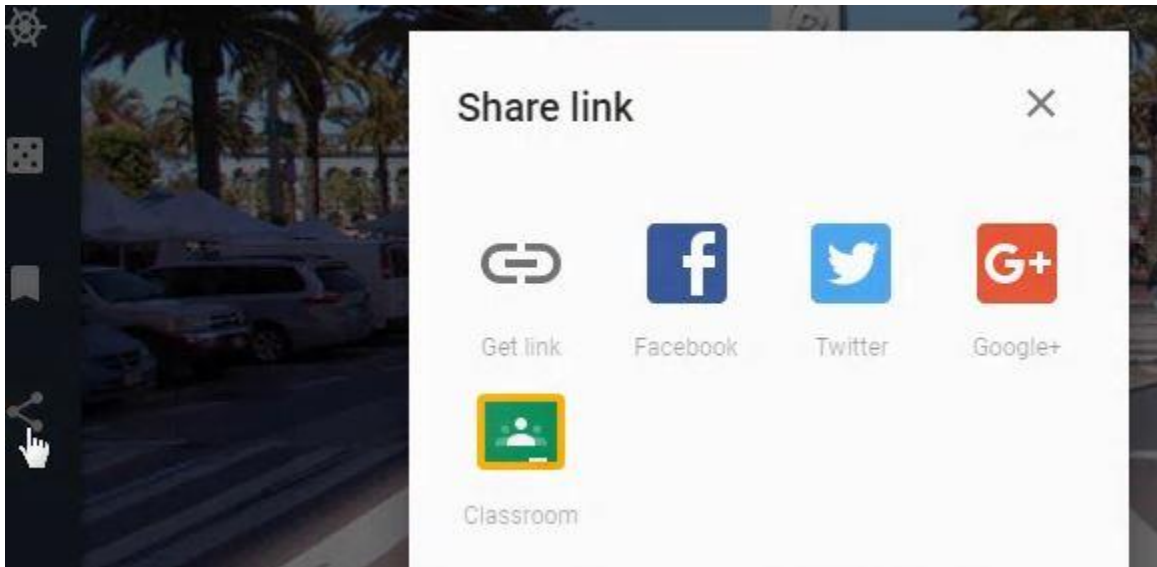
3. You can toggle between 3D and 2D.



4. You can switch to street view clicking on the pegman, and then clicking on a location.

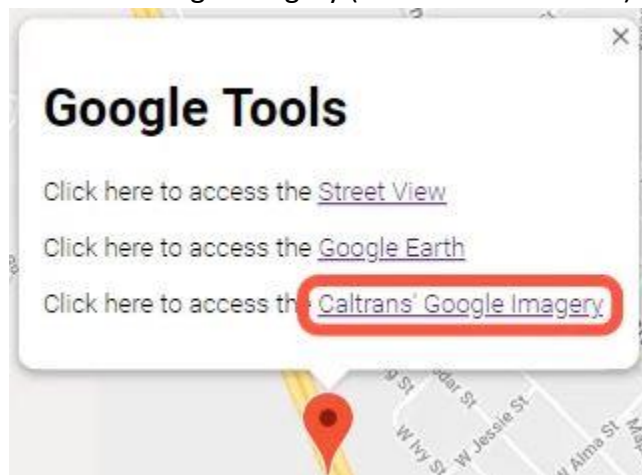


5. Get the link for your location by clicking on the share icon and selecting "Get link".

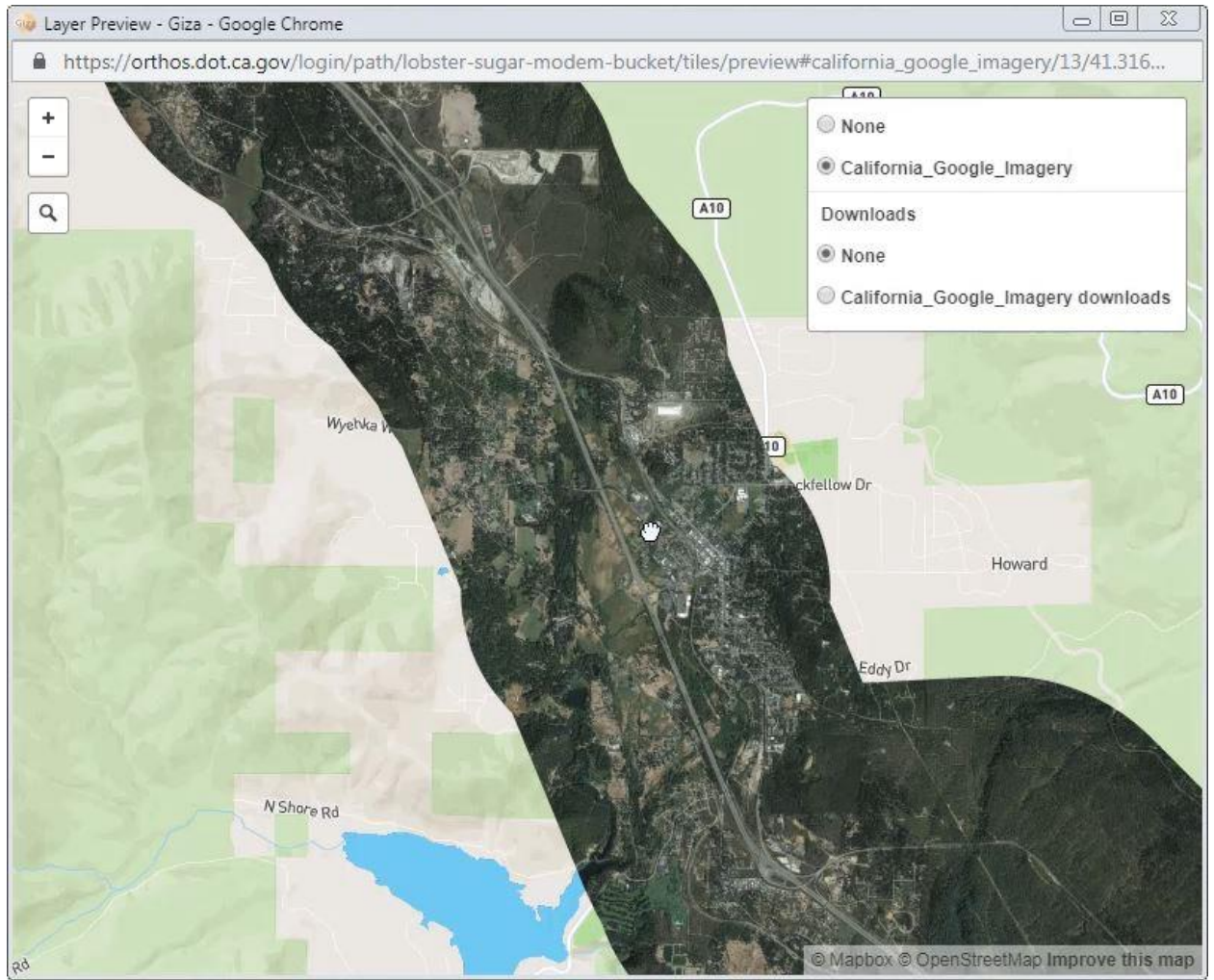


### Caltrans' Google Imagery

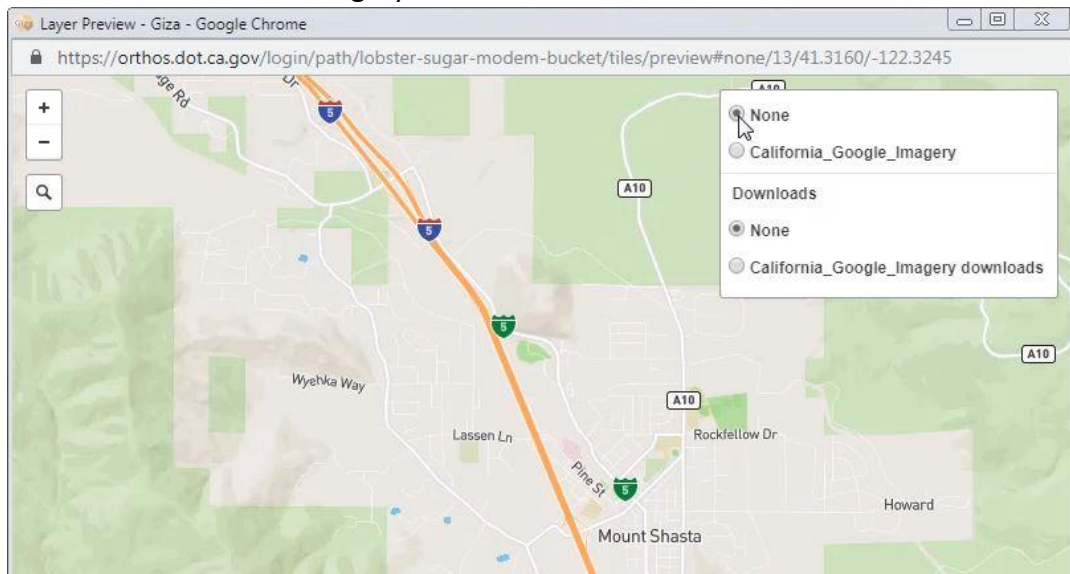
1. Click here to access Caltrans' Google Imagery (licensed for Caltrans).



2. Caltrans' Google Imagery offers high resolution imagery of California highways.

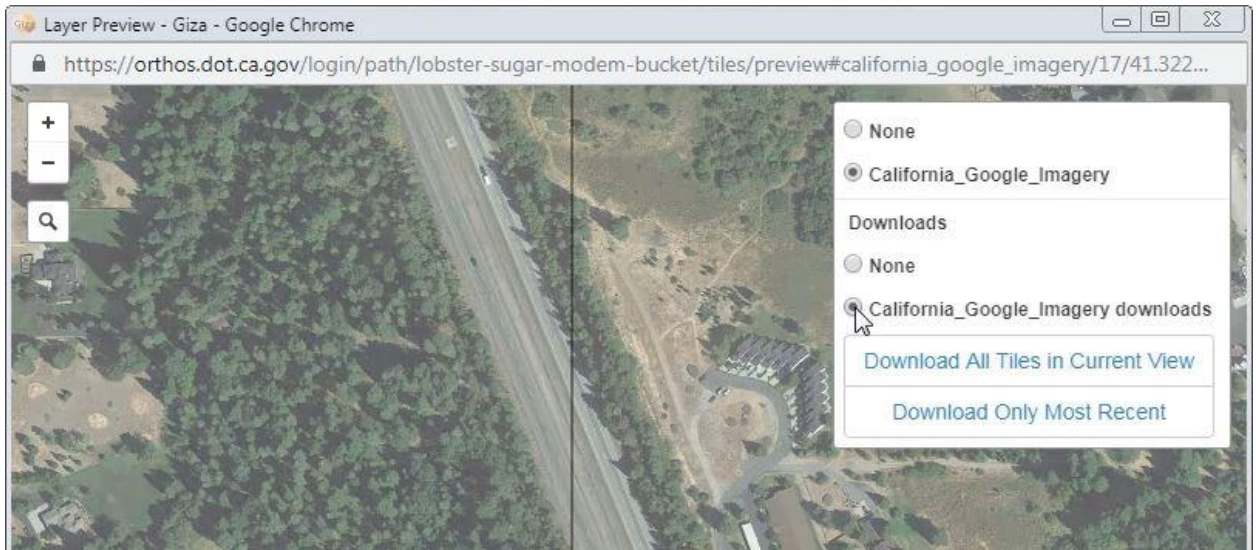


3. Click None to turn off the imagery.

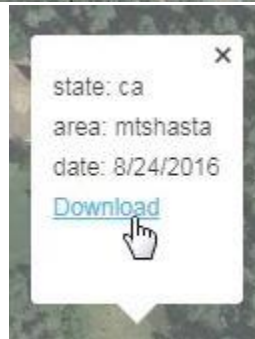
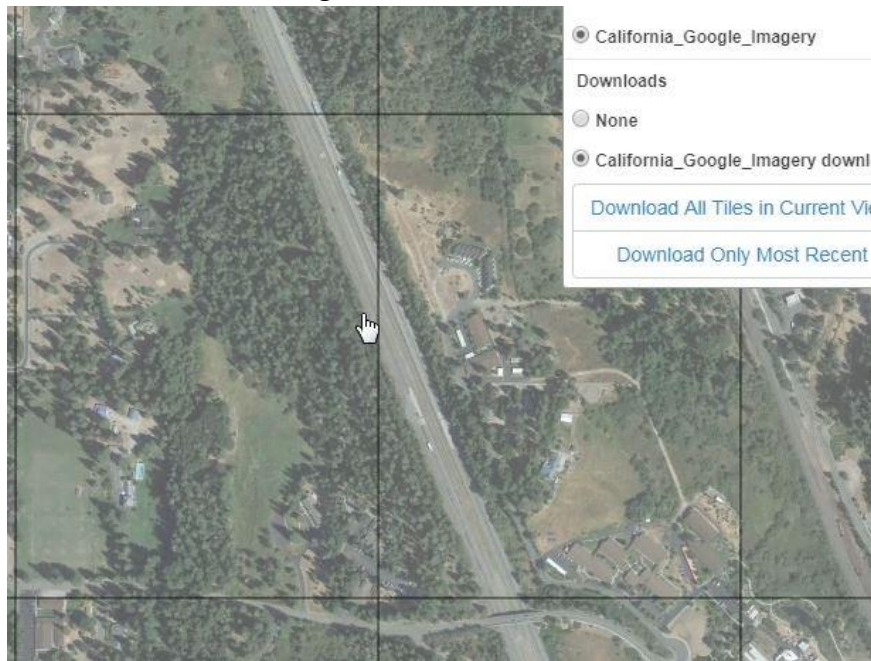




4. To download images, zoom in and select California\_Google\_Imagery downloads.



5. Click on a tile to download the image.



6. Click on Download All Tiles in Current View to download the all the images in the current extent.

